

BACK ON MARKET

TOWER COURT APARTMENTS

LAKESWOOD, WA

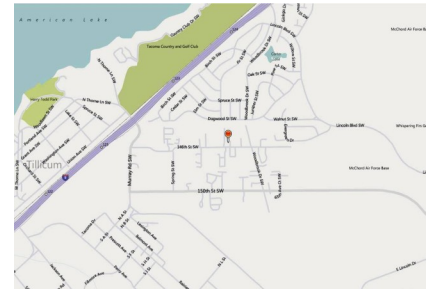
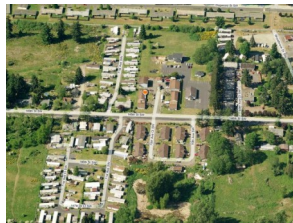
FOR SALE



\$795,000



- 15 UNITS
- 7-2 BDRM/1 BATH
- 7-1 BDRM/1 BATH
- 1-3 BDRM/1 BATH
- 8800SF BUILDINGS
- 47,045SF LAND
- PRIVATE DRIVE, NICE YARDS, GARDEN SETTING
- WORKSHOP/LAUNDRY
- PARCEL #: 021922-1-050
- **9 CAP ACTUAL**
- **10 CAP PROFORMA**



14520 70TH AVE. COURT, LAKESWOOD, WA 98499

Very nice little complex with mostly single level garden style apartments and one 2 floor fourplex. Manager's unit has 3 bedrooms and a washer/dryer among other upgrades. Tons of parking including numerous private carports. Room for boats, RV's or trailers. Excellent location just off I-5 between Fort Lewis and McCord Air Base. Rarely a vacancy.



ROBB TURNER – EXCLUSIVE BROKER

COMMERCIAL REAL ESTATE SERVICES

REGENCY GROUP INC.

11711 SE 8TH STREET, SUITE 310
BELLEVUE, WA 98005

Phone: 425-454-4000
Mobile: 425-466-4855
Fax: 425-451-1642
E-mail: robb@regencygroupinc.com

ALL INFORMATION DEEMED TO BE RELIABLE BUT NOT GUARANTEED